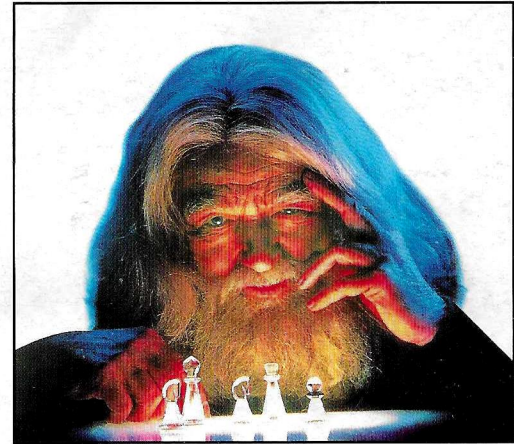
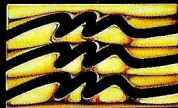


# THE CHESSMASTER



## Instruction Booklet

**BAN  
DAI**



DISTRIBUTED BY  
BANDAI UK LTD.  
UNIT E1, FAREHAM HEIGHTS  
STANDARD WAY, FAREHAM  
HANTS PO16 8XT  
ENGLAND

PRINTED IN JAPAN



***SUPER NINTENDO***<sup>TM</sup>  
ENTERTAINMENT SYSTEM  
PAL VERSION

WARNING: PLEASE CAREFULLY READ THE CONSUMER INFORMATION AND PRECAUTIONS BOOKLET INCLUDED WITH THIS PRODUCT BEFORE USING YOUR NINTENDO® HARDWARE SYSTEM, GAME PAK OR ACCESSORY.

The Chessmaster, Copyright © 1989-1992 The Software Toolworks, Inc.  
Portions Copyright 1986, 1988 IHP. All rights reserved.  
The Chessmaster® is a registered trademark of The Software Toolworks, Inc.  
Mindscape® is a registered trademark of Mindscape Int.

## Table of Contents

Rules of Chess.....	2
The Pieces .....	3
Special Moves .....	8
Checkmate, Stalemate and Draw .....	10
Game Controls .....	11
Starting the Game .....	12
Playing with <i>The Chessmaster</i> .....	12
Menu.....	13
War Room .....	19



NINTENDO® SUPER NINTENDO ENTERTAINMENT SYSTEM™, THE NINTENDO PRODUCT SEALS AND OTHER MARKS DESIGNATED AS "TM" ARE TRADEMARKS OF NINTENDO.



THIS SEAL IS YOUR ASSURANCE THAT NINTENDO HAS APPROVED THE QUALITY OF THIS PRODUCT. ALWAYS LOOK FOR THIS SEAL WHEN BUYING GAMES AND ACCESSORIES TO ENSURE COMPLETE COMPATIBILITY WITH YOUR SUPER NINTENDO ENTERTAINMENT SYSTEM.

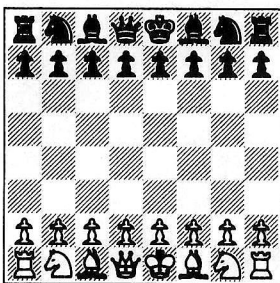
## Rules of Chess

Chess is a two player game: Player 1 is **White** and Player 2 is Black (regardless of the actual colours on a given chess set). In *The Chessmaster* you can play the computer or another player. When you play the computer, normally you are **White**.

### Setting Up the Board

At the beginning of a new game, *The Chessmaster* automatically sets up the pieces on the *Chessboard*, according to the official rules of Chess. For your information, the pieces are set up as shown below. Here are some general rules to help you learn the proper setup:

- The square in the lower right corner is **White** (white on right).
- Kings and Queens are directly opposite each other.
- The **White** Queen goes on a white square and the Black Queen goes on a **black** square (Queen on colour).



### Objective

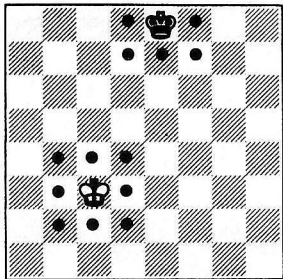
The goal of chess is to *checkmate* your opponent's King. Unlike other pieces, the King is not captured and removed; instead, he is trapped so that he cannot move. When a King is attacked, he is *checked* and must get out of check on the next move. If there is no escape, the position is a *checkmate* and the checkmated side loses.

---

## The Pieces

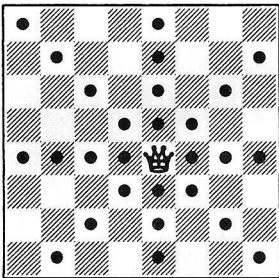
White always moves first, then the players take turns. You can move one piece during each turn, except in castling, where you can move your King and a Rook (see SPECIAL MOVES). The Knight is the only piece that can jump over other pieces. All other pieces must move along unblocked horizontal, vertical, or diagonal lines. You cannot have two of your own pieces on a square, but you can capture an enemy piece by landing on the square where it is standing. When you capture an enemy, you remove it and put your own piece there. In *The Chessmaster*, captured pieces automatically disappear from the board.

## The King



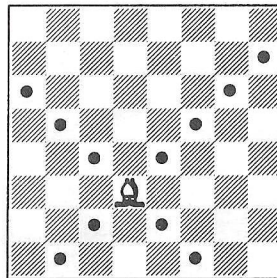
The King is the most important piece in the game. When your King is checkmated (trapped), you lose. Except for *castling*, the King can only move one square in any direction, as shown by the dotted squares in the diagram above. The King may not move into check, that is, onto a square under attack by an enemy piece.

## The Queen



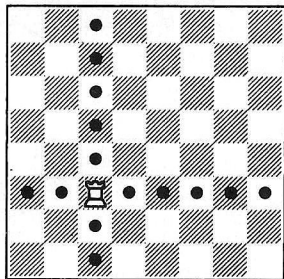
The Queen is the most powerful piece in the game. The Queen can move any number of squares in any direction that is not blocked, as shown by the dotted squares in the diagram above.

## The Bishop



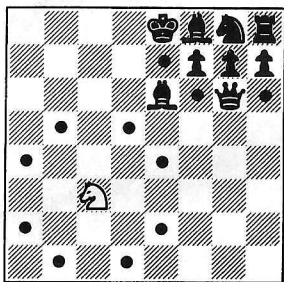
The Bishop can move any number of squares in a diagonal direction that is not blocked, as shown by the dotted squares in the diagram above. Each side has one Bishop on a white square and another on a black square. Each Bishop is restricted to diagonal moves along its coloured squares.

## The Rook



The Rook can move any number of squares in horizontal or vertical directions that are not blocked, as shown by the dotted squares in the diagram above. Each side has two Rooks. They are not restricted by coloured squares.

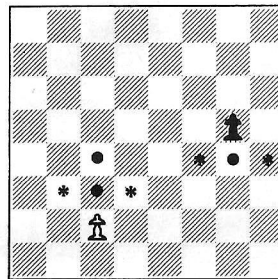
## The Knight



The Knight move is a special L-shaped jump and it is the only piece that can jump other pieces. The Knights's jump is two squares horizontally or vertically, then one more square at a right angle, as shown by the dotted squares in the diagram

above. The Knight always lands on a square that is the opposite colour from where it starts. The Knight does not capture pieces it jumps; it only captures an enemy when it lands on its square. Each side has two Knights.

## The Pawn



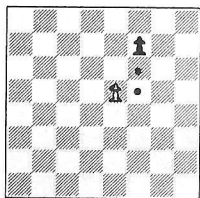
The Pawn moves straight ahead, but it captures diagonally. On the first move, the Pawn has the option of moving one or two squares, after that it may move one square. In the diagram above, the dotted squares show possible forward moves, and the asterisked squares show possible captures. Note that the **White** Pawn has two possible forward moves (first move), but the **Black** Pawn has one possible forward move, because it is not on its first move. If a Pawn gets to the other side of the board (row 8), it is promoted to another piece (other than a Pawn or King). So you can end up with more than one Queen and more than two Bishops, Knights, or Rooks. See PLAYING WITH THE CHESSMASTER.

## Special Moves

There are two special moves that are important in Chess: *En passant* and *castling*. The *Chessmaster* can execute both of them.

### *En Passant*

This French phrase means 'in passing' and is a special Pawn capture. The capture is made when a player moves a Pawn two squares to avoid capture; however, the capture is made exactly as if the player had only moved the Pawn one square.

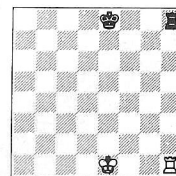


In the diagram above, the **Black** Pawn moves up two dotted squares. On its next turn, the **White** Pawn may capture the **Black** one. If the **White** player does not execute this move on its next turn, that **Black** Pawn is safe from *en passant* capture for the rest of the game. Note that each Pawn can be threatened in this way.

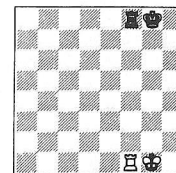
### *Castling*

Each player may *castle* once during a game, if certain conditions are met. *Castling* lets you move two pieces at once: your King and a Rook. The King moves two squares left or right toward one of his Rooks. At the same time, the Rook goes to the square beside his King that is toward the centre of the board, as shown in the diagrams below.

### *Kingside Castling*

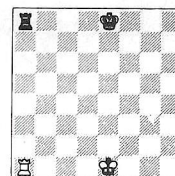


Before

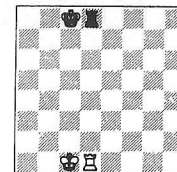


After

### *Queenside Castling*



Before



After

To *castle*, neither piece may have moved before. Also, the King may not castle out of, into, or through *check*. Finally, there may not be any pieces of either colour between the King and the *castling* Rook.

*Castling* is an important move, because it lets you move your King to safety, while letting the Rook become more strategically active. When the move is legal, you can *castle* to either side or not at all.

## Checkmate, Stalemate and Draw

Now that you understand how the pieces move, you need to know how to keep your opponent from *checkmating* your King.

You may not move into *check*. For example, you may not move onto a diagonal with your opponent's Bishop if there are no other pieces between the Bishop and your King. If you are in *check*, you have three options:

1. Capture the attacking piece.
2. Put one of your other pieces between the attacker and your King.
3. Move the King away from the attack.

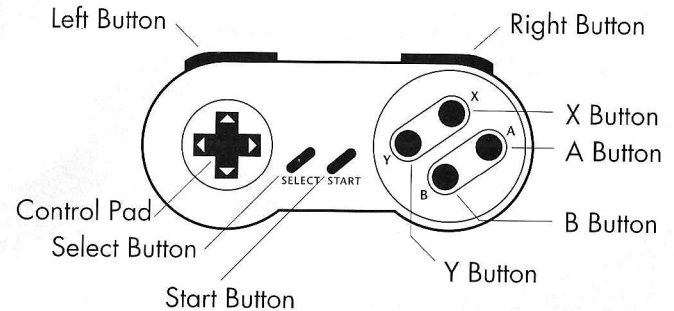
If you cannot do any of these things, you are *checkmated* and you lose!

If your King is not in *check*, but you can make no legal move, then you have a *stalemate* and the game is a *draw* or tie. There are two other ways you can have a *draw*.

1. 3 Repetition *Draw*: If the same board position occurs three times during the game, you have a *draw*.
2. 50 Moves without progress: If 50 moves occur without progress, you have a *draw*.

The *Chessmaster* keeps track of both position repetitions and number of moves.

## Game Controls



**Control Pad:** Moves the hand around and the selection line up and down.

**Select:** Switches back and forth between the *Chessboard* and the *Menu*. Also confirms a setting change.

**Start:** Starts the game and continues after a message.

**A, B, X, Y:** Press any button to select an action, to change a setting, and to pick up pieces. In this guide, **A** stands for any of these buttons.

**L:** Take back a move.

**R:** Replay a move that you have taken back.

## Starting the Game

To start the game:

1. Put *The Chessmaster*® in your Super Nintendo Entertainment System® (NES).
2. Turn **on** the Super NES.
3. At *The Chessmaster* title screen, press **Start**.

When the *Chessboard* appears, you are ready to play chess!

---

## Playing with The Chessmaster

To move one of your pieces:

1. Use the **Control Pad** to position the hand over the piece you want to move.
2. Press **A** to pick up the piece.
3. Use the **Control Pad** to move the piece to the desired destination square.
4. Press **A** to release the piece.

*Note:* *The Chessmaster* tells you if you attempt to make an illegal move.

To castle, move your King two squares towards the Rook. The Rook then moves into place automatically.

To capture a pawn *en passant*, move your pawn to the appropriate destination square. (Right behind the enemy pawn.)

If one of your pawns reaches row 8, *The Chessmaster* asks you to promote the pawn. To promote the pawn, press one of these buttons to select the piece:

<b>A</b>	Queen	<b>X</b>	Rook
<b>B</b>	Bishop	<b>Y</b>	Knight

---

## Menu

Use the *Menu* to select actions and change settings. To go to the *Menu*, press **Select**.

*Note:* When *Menu* options are blue (instead of white), it means they are not available due to playing circumstances. The first ten *Menu* options are actions; the last ten are settings. See *Action Options* and *Setting Options*.

To select an action:

1. Use the **Control Pad** to move the arrow to your selection.
2. Press **A** to start the action.

The *Chessboard* appears.

To change a setting:

1. Use the **Control Pad** to move the arrow to your selection.
2. Press **A** until the setting you want appears.
3. Press **Select** to confirm the setting.

The *Chessboard* appears.

## Action options

The action options include:

**Begin New Game:** Stop any game in progress and start a new game.

**Change Sides:** When it's your turn, you may ask *The Chessmaster* to play your pieces while you play its pieces. Use this at the beginning of the game to make *The Chessmaster* play the **White** pieces.


**Play Against Chessmaster:** Play a game of Chess against *The Chessmaster*.

**Autoplay:** Watch *The Chessmaster* play against itself. Press **Select** to interrupt and go to the Menu.

**Play Against Another Human:** Play a game of Chess against another player with *The Chessmaster* acting as referee. When it's Black's turn, the second game controller controls the hand.

**Force Chessmaster to Move:** When *The Chessmaster* is thinking about its move, selecting this forces an immediate move. Also used in Infinite level of play to make *The Chessmaster* move.

**Get Advice From Chessmaster:** *The Chessmaster* demonstrates the move it recommends for you.

**Take Back/Replay Mode:** Enter a mode where you can take back some or all moves made so far during the game. In this mode, the hand changes to  and you can do the following:

1. Press L to take back a move.
2. Press R to replay a move.
3. Press Select to resume normal play.

*Note:* You can press L to take back a move directly from the *Chessboard*.

**Set Up The Board:** Arrange the pieces on the board. The *Chessboard* is displayed along with the *Grab Bag*, which holds pieces.

To remove a piece from the *Chessboard*:

1. Use the **Control Pad** to position the hand over the piece you want to remove.
2. Press **A** to pick up the piece.
3. Use the **Control Pad** to move the piece off the board.
4. Press **A** to drop the piece.

*Note:* You cannot remove the Kings.

To add a piece to the board:

1. Use the **Control Pad** to position the hand over the *Grab Bag*.
2. Press **A** to pick up the piece.
3. Use the **Control Pad** to move the piece over the destination square on the board.
4. Press **A** to drop the piece.

You may set up the board with the following restrictions:

- You may not put pawns on rows 1 or 8.
- The number of Queens, Rooks, Knights, or Bishops that you may place depends on the number of missing pawns.

While in *Setup Mode*, press **Select** to go to the *Setup Menu*. To select one of the following options, press the **Control Pad** to highlight it, then press **A**:

- **Clear the Board**: Clears the board of all pieces except the Kings.
- **Set Up Initial Position**: Places pieces in position for a new game.
- **Side to Move First is White**: Indicates whose turn it will be when you return to the game. Use this selection to toggle between White and Black.
- **Setup Complete**: Returns to game.
- **Leave and Abandon Changes**: Returns to game and ignores anything you did during setup.

**Solve For Mate**: You must be playing against *The Chessmaster* to use this option. Ask *The Chessmaster* to examine the current position and tell you whether a forced mate exists in a given number of moves. If *The Chessmaster* finds a solution, those moves are added to the move list and you are put into **Take Back/Replay Mode**.

To view the solution, press **Start**.

If there is no solution, press **Start** to continue.

To interrupt *The Chessmaster* while it is solving for a forced mate, press **Select**.

## Setting options

The setting options are:

**Level of Play is Newcomer 1**: Set the level of play. You can select from 16 levels of play:

- **Newcomer 1**: Easiest level.
- **Newcomer 2**: Very easy level.
- **Levels 1-13**: Increasingly challenging games. The numbers after the level number tell you the number of moves and amount of time *The Chessmaster* will take at this level. For example, Level 1 is 60/5, which means 60 moves in 5 minutes; Level 7 is 30/45, which means 30 moves in 45 minutes.
- **Infinite**: *The Chessmaster* thinks about its move until you select Force Chessmaster to Move.

**Deep Thinking Is On/Off**: Set the thinking ability of *The Chessmaster*:

- **On**: *The Chessmaster* thinks ahead while you think about your move.
- **Off**: *The Chessmaster* thinks only about its current move and only during its turn.

**Opening Book Is On/Off**: Set the ability of *The Chessmaster* to consult its library of over 150,000 positions during the early part of the game:

- **On**: *The Chessmaster* consults its library.
- **Off**: *The Chessmaster* doesn't consult its library.

**Teaching Mode Is On/Off:** This feature is helpful if you are just learning the game. Set ability of *The Chessmaster* to show you all the legal moves for a particular piece when you pick up that piece:

- **On:** *The Chessmaster* shows you moves.
- **Off:** *The Chessmaster* doesn't show you moves.

*Notes:* **Teaching Mode is not available in 3D mode.**

**Board Coordinates On/Off:** Set the rank and file display for the *Chessboard*:

- **On:** You see the rank and file coordinates (1-8 and A-H) along the edge of the board.
- **Off:** You don't see the rank and file coordinates along the edge of the board.

**White Pieces on Bottom:** Set the rotation of the *Chessboard* so the White pieces are in one of these positions:

- **Bottom**
- **Top**
- **Left side**
- **Right side**

*Note:* When you rotate the board, the rank and file coordinates (**set with Board Coordinates On/Off**) also rotate.

**Board View Is 2D:** Set the *Chessboard* display:

- **Board View Is 2D:** You see the normal full screen display of the *Chessboard*.
- **Board View Is 3D:** You see a three dimensional view of the *Chessboard*.

- **Board View Is War Room:** You go to the War Room, which includes several informational features. See *War Room*.

**Chess Set is Staunton/Fantasy:** Used to set the type of chess set.

- **Staunton:** Standard chess set.
- **Fantasy:** Fantastical chess set.

*Note:* The Fantasy chess set is not available in the War Room.

**Background Music Is On/Off:** Used to set background music.

- **On:** Background music is on.
- **Off:** Background music is off.

**Mate in 1 Move(s):** Used with **Solve for Mate**. Set a number from 1 to 5 to tell *The Chessmaster* the number of moves to use to solve for a forced mate.

---

## War Room

In the **War Room**, a smaller version of the *Chessboard* is displayed along with several informational features:

- **Move List:** Shows the last 4 moves made by each player in rank and file coordinate notation.

Example:

**White h5-h6, f3-g5, d1-d2+, d2-d4**

+ indicates a *Check*, ++ indicates a *Checkmate*.

- **Best:** The best line of moves *The Chessmaster* has found so far.
- **Hint:** The move that *The Chessmaster* considers your best bet given your position.
- **Captured Pieces:** Shows all of the pieces that have been removed from the board.
- **PL:** The *ply*, which is the number of moves ahead that *The Chessmaster* is thinking about.
- **MV:** The number of legal moves in the current *ply*.

## 90-day limited warranty

Super Nintendo Entertainment System Game Paks

Bandai UK Ltd. ("Bandai") warrants to the original consumer purchaser that the Super Nintendo Game Pak ("Pak") shall be free from defects in material and workmanship for a period of 90 days from the date of purchase. If a defect covered by this warranty occurs during this 90-day limited warranty period, Bandai will repair or replace the defective Pak, at its option, free of charge.

To receive this warranty service, return the Pak postage prepaid, insured, and with proof of the date of purchase to:

Bandai UK Ltd.  
 Nintendo Service Dept.  
 Bandai Distribution  
 Parham Drive  
 Boyatt Wood  
 Eastleigh, Hants  
 SO5 4NU England  
 Tel: (0329) 243 300

Paks returned without proof of the date of purchase or after the 90-day limited warranty period will, at the option of Bandai, be repaired at the service charge then in effect for out-of-warranty repair. Call our services at (0329) 243 300 for the amount of this charge. (Repair done after acceptance of the quotation.) Payments must be made by cheque or money order, payable to Bandai UK Ltd.

This warranty shall not apply if the Pak has been damaged by negligence, accident, abuse or modification subsequent to purchase. This warranty does not interfere with your statutory rights. For all information on this Game Pak or other Super NES Game Paks, call the Nintendo "Hotline" at: (0703 ) 652 222.

# NINTENDO HOTLINE

Do you have a question about game play?  
Are you being stomped by a Thwomp in Mario 3?  
Or do gargoyles gang up on your Game Boy?

If your answer to these questions is yes,  
then why not call the

**NINTENDO HOTLINE**  
**WE ARE OPEN 12 P.M. - 8P.M.**  
**MONDAY TO FRIDAY**  
**10A.M. - 3P.M. SATURDAY AND SUNDAY**

Why not telephone now, and one of our expert counsellors  
will be more than happy to answer your call.

**THE NUMBER TO CALL IS**  
**0703 652222**